



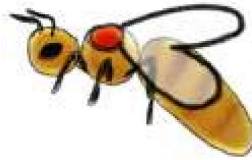
MEYER BEES

2023 Packages, Nucs, Queens and Beekeeping Supplies

www.meyerbees.com contact@meyerbees.com
2021 Holt Road • Minooka IL 60447 • 815-521-9116

MULTIPLE RACES AVAILABLE FOR 2023 PACKAGES, NUCS AND QUEENS
ITALIAN, RUSSIAN, CARNIOLAN, SASKATRAZ AND LOCAL MEYER BEES QUEENS

Order now ▶



COMPLETE LINE OF BEEKEEPING SUPPLIES AVAILABLE AT THE SHOWROOM & WAREHOUSE
JUST 35 MILES SOUTHWEST OF CHICAGO - STOP BY AND SEE US OR ORDER ONLINE!



10 frame
8 frame
5 frame
4 frame
custom

*insulated winter inner covers
w/candy board and upper vent*

 **varroa
easy
check
and treatments**

**custom build
a starter kit
combo to
fit your needs
SAVE \$\$**

**contact us
for details**



*complete line
of Lyson
polystyrene
hive kits*



**1 & 2 story re-usable
bee cozy hive wrap**



**FAST
SHIPPING**

 follow us on social media
<https://facebook.com/beesmeyer>





THOUSANDS OF ITEMS IN STOCK - SEE A SMALL SAMPLE BELOW



unassembled commercial 9 5/8" - 10, 8 or 5 frame deep
unassembled commercial 6 5/8" - 10, 8 or 5 frame medium
unassembled commercial 5 5/8" 10 frame shallow
assembled and painted boxes available - contact us for details
assembled telescoping cover - 10, 8 or 5 frame
assembled inner cover cover - 10, 8 or 5 frame
assembled bottom board w/reducer - 10, 8 or 5 frame
assembled varroa screen bottom board w/tray -10, 8 or 5 frame
complete assembled and painted hive kits available - contact us
7D cement resin coated small diameter nails, 1 lb
9 1/8" waxed rite-cell assembled and unassembled frames
6 1/4" waxed rite-cell assembled and unassembled frames
frames - unassembled groove, wedge and split styles - contact us
wax foundation - thin / cut comb, wired, hook, small cell - contact us
mouse guards, stainless steel - 10, 8 or 5 frame
metal bound queen excluder - 10 or 8 frame
plastic queen excluder - 10, 8 or 5 frame
slow release pheromone swarm lure
smoker fuel, burlap bags and smoker pellets
top feeders, frame feeders and many more options
bee brush with synthetic bristles or natural horehair
uncapping scratchers in various styles
pro health feed stimulant w/essential oils, 1 pt, makes 25 gal
small hive beetle trap and Guardian brand traps
mite away quick strips and formic pro treatments
varroa easy check - mite check kit
nuc: unassembled complete 5 frame box w/migratory cover
** bulk discounts available on most items, prices subject to change



Hive Parts Available as:
UNASSEMBLED
FULLY ASSEMBLED
ASSEMBLED & PAINTED



FAST SHIPPING

GLASS / PLASTIC BOTTLES & LABELS - MANY STYLES TO CHOOSE FROM




ADDITIONAL STYLES ARE IN STOCK AND AVAILABLE



2023 SPRING BEE PICK-UP ORDER FORM

ITALIAN, RUSSIAN, CARNIOLAN, SASKATRAZ AND LOCAL MEYER BEES QUEENS

	Item	Price	Quan	Total
PACKAGES	3 pound Italian package w/mated and laying Italian queen	\$135		
	3 pound Carniolan package w/mated and laying Carniolan queen	\$145		
	3 pound Russian package w/mated and laying Russian queen	\$145		
	3 pound Saskatraz package w/mated and laying queen (available mid April to mid May)	\$160		
	Queen marking on packages above, priced per package (the color for 2023 = red)	\$5		
	3 pound bulk package of bees with no queen	\$120		
NUCS	5 frame Italian nuc w/mated and laying marked Italian queen, 2-3 fr brood, 1-2 fr honey/pollen	\$175		
	5 frame Russian nuc w/mated and laying marked Russian queen, 2-3 fr brood, 1-2 fr honey/pollen	\$185		
	5 frame Carniolan nuc w/mated and laying marked Carniolan queen, 2-3 fr brood, 1-2 fr honey/pollen	\$185		
	5 frame Saskatraz nuc w/mated and laying marked Saskatraz queen, 2-3 fr brood, 1-2 fr honey/pollen	\$205		
	5 frame Overwintered nuc w/mated and laying marked overwintered Meyer Bees queen	\$215		
QUEENS	Early season marked and mated Italian queens mid March to May, Meyer Bees queens available May+	\$35		
	Marked and mated Russian queens mid March+	\$40		
	Marked and mated Carniolan queens early April+	\$40		
	Marked and mated Saskatraz queens mid April+	\$42		
	Queen cells, virgin queens and instrumentally inseminated queens available - contact us for details			
	Ultra Bee 18% protein feed patty for packages and nucs, approx 1 pound	\$4		
	Global Patties "real pollen" protein patty for packages and nucs w/15% protein, approx 1 pound	\$5		

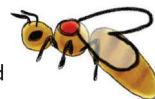
 Select your pickup date. Orders are processed on a first come first served basis - weather can impact dates. Indicate your preferred pickup dates 1 through 3 with 1 indicating most preferred. Leaving this section blank indicates first available.

SEASON

- ✓ Payment in full is required at the time of purchase
- ✓ Limited quantities / availability on some items
- ✓ If you have a DOA queen she must be returned in the original sealed queen cage within 2 days - a replacement will be provided
- ✓ You must pickup your bees on your designated pick-up date, We will contact you when the specific date is determined
- ✓ Multiple pickup dates are planned at our Minooka location in March, April and May (weather can impact the dates)
- ✓ Make sure you have your hive ready before the bees arrive
- ✓ Package bees should be fed at the time they are installed, both sugar syrup and pollen patties are recommended, feed them until they won't take any more (sometimes this can last up to 6 weeks)

Payment (circle) CASH / CHECK TOTAL \$

	End March	Early April	Mid April	End April	Early May	Mid May	End May
Packages							
Nucs	NA	NA	NA				
Queens							



Name

Address

City State Zip

Phone Is this a mobile phone? (circle) Y N

Email address

Orders can be mailed with a check or money order to:
Meyer Bees
2021 Holt Road
Minooka, IL 60447

Call or email with any questions:
815-521-9116
contact@meyerbees.com

Beekeeping association(s) you belong to, how did you hear about us:



MEYER BEES

2023 Mason & Leafcutter Bees

www.meyerbees.com contact@meyerbees.com
 2021 Holt Road • Minooka IL 60447 • 815-521-9116



LOCALLY ADAPTED SOLITARY BEES FOR POLLINATION OF YOUR FRUITS & VEGETABLES

Solitary female bees mate then build their own nests, gather nectar and pollen, and lays eggs. Since there is no hive to defend or feed, solitary bees are not aggressive. Solitary bees don't make honey. Some solitary bees like the mason bees and leafcutter bees are hole-nesting bees who use pre-made nesting holes and overwinter in cocoons. These hole nesting bees are gentle, easy to raise and you don't need protective gear to take care of them. Solitary bees have a range of about 300 feet and they are much more focused on your nearby flower blooms. Honeybees have a range of 2 miles or more.



100 times more effective pollinators than honey bees due how they carry pollen loose & dry on their hairy bellies



Mason Bees are spring bees which emerge once the temperatures remain around 50 degrees. Once emerged they seek out spring fruit and nut trees and berry bushes. They do a great job of cross-pollination between early season plants. The Mason Bees utilize "clayey" mud for building nest walls hence the "Mason" name. Be sure to have a source of mud within 25 feet.

Leafcutter Bees are summer bees which emerge once the temperatures remain around 75 degrees. Once emerged they seek out summer fruit trees, vegetables and flowers. They utilize leaves for building nesting cocoons hence their name. Leafcutters are smaller than mason bees and require slightly smaller sized nesting blocks.



Starting the spring season with Mason Bees and then changing over to Leafcutter Bees in summer provides an entire season of local pollinators for your close-by fruit trees, vegetables and flower gardens. Bee diversity evidence suggests a 24% increase in crop yields when running both solitary bees and honey bees side by side.

Item	Price	Quan	Total
Chalet House kit for Mason & Leafcutter Bees - assembly required	\$35		
Chalet House for Mason & Leafcutter Bees - assembled	\$50		
Mason Bee Nesting Reeds - 10 pack	\$9		
Mason Bee Nesting Reeds - 50 pack	\$18		
Mason Bees 48 Hole Nesting Block (reusable)	\$35		
Mason Bees 96 Hole Nesting Block (reusable)	\$45		
Mason Bee Cocoons - 20 pack (approx 12 males and 8 females)	\$25		
Mason Bee Cocoons - 40 pack (approx 24 males and 16 females)	\$47		
Mason Bee Cocoons - 100 pack (approx 60 males and 40 females)	\$105		
Mason Bee Clay - approx 1 pound bag	\$19		
Mason Bee Humidity Storage Box for Cocoons	\$5		
Leafcutter Bee Nesting Reeds - 10 pack	\$9		
Leafcutter Bee Nesting Reeds - 50 pack	\$18		
Leafcutter Bee 104 Hole Nesting Block (reusable)	\$35		
Leafcutter Bees 104 block with approx 100 bees (reusable block)	\$65		
Pest-Prevention Bag for Nesting Reeds / Blocks (approx 20" x 21")	\$7		



*durable insulated
Langstroth size hive boxes
deeps and mediums
never need painting!*



*vented
leather
gloves*

NEW



*many
smokers*



entrance reducer



*burr
comb
tool*

**FAST
SHIPPING**



bee brushes



*stainless
steel
hive tools*



*9"
spring
steel
hive tool*

FEED ITEMS: HFCS 55, POLLEN, PROTEIN AND SUPPLEMENTS



The following feed items are available for purchase:

- High Fructose Corn Syrup 55 (HFCS) in bulk, totes, barrels or 5 gallon pails, available for pickup from multiple Illinois locations each month - we can fill your containers - call for details
- Pro-Sweet Liquid Feed is the best liquid feed available containing both binomial sugars (think nectar) and monomial sugars (think honey)
- Ultra Bee 58% bulk pollen substitute, also available in pre-made 18% protein patties that can be installed directly into the hives
- Winter patties with 4% protein in bulk and pre-made patties
- Fondant 90/10 in bulk and ready to use 1 pound patties
- Complete line of feed supplements from Mann Lake, Honey B Healthy and others covering both nutrition and health needs



READY TO USE



one pound Ultra Bee patties
*4% protein winter patties
18% protein brood builder patties
(bulk quantities are available)*

IN STOCK



BASSWOOD

Split Section Boxes
for Comb Honey



"Kelly"
Size & Style
for competitions
as well as general
comb production

LOCAL QUEENS PRODUCED FROM OUR BEST OVERWINTERED COLONIES - CALL FOR AVAILABILITY! COMPLETE SELECTION OF QUEEN REARING SUPPLIES



SEE OUR WEBSITE FOR ADDITIONAL PARTS



TREATMENTS FOR MITES, HIVE BEETLES AND MORE



PROTECTIVE GEAR - SUITS, JACKETS, HATS, VEILS, GLOVES EQUIPMENT - HIVE TOOLS, SMOKERS, FUEL, BRUSHES, TRAPS, ETC.



MEYER BEES LOCAL QUEENS - MINOOKA, IL (CHICAGOLAND)



Each spring, we evaluate our apiaries and select a handful of top quality colonies with the traits below. The selected mother queens from these colonies are grafted from to produce daughter queens which we mate in our Minooka, IL apiary. We work with our neighbors in a 1 to 2 mile ring around our mating yard and place desirable drone production colonies at these sites to ensure the daughter queens are well mated. The daughter queens laying patterns are evaluated before offering them for sale. Queen pickup and shipping options are available.



MOTHER QUEEN SELECTION PROCESS:

- Colony and mother queen must survive one or more Chicagoland winters
- Colony must produce 125+ pounds of excess honey in prior year
- Colony must have a gentle temperament and be easy to work
- Colony must show mite and disease resistance



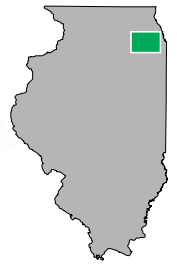


MEYER BEES

2021 Holt Road • Minooka IL 60447

www.meyerbees.com

815-521-9116



HIVE WOODENWARE EQUIPMENT

WAX DIPPING DAYS

Take your woodenware equipment to the next level with **HiveGuard™** !!!
Skip painting and instead wax dip your woodenware equipment.
Dipping of new, used and painted equipment options available.

HiveGuard™ is a proven proprietary blend of paraffin wax, microcrystalline wax and a special additive for enhanced performance of the formula. **HiveGuard™** replaces “unfriendly” chemicals such as rosin, solvents and paints to provide superior performance.



Optimal **HiveGuard™** wax formulation consisting of the perfect blend of paraffin wax & microcrystalline wax:

- Maximum preservation & disease prevention
- Excellent penetration / impregnation
- Excellent adhesion
- Maintains flexibility to prevent cracking
- Up to 25 year durability on dipped equipment



NO MORE PAINTING!

- **HiveGuard™** is a single component that is simple to apply
- High temperature sterilization & stability
- Dipping prevents penetration of water into the wood
- Can be painted if desired when the wax is still hot
- For hive boxes, bottom boards, top covers, spacing shims, and any other items that are normally painted
- Wax formulation complies with FDA regulations
- Long-term cost effective vs. the elements and diseases
- Popular in Canada, Australia and now the USA

\$5 per piece
depending on options

Several wax dipping days are planned for spring 2023.
Reach out to us for details and to book a time slot.



VARIETAL HONEY & BEE PRODUCTS ORDER FORM



Honey Variety / Product	Description / Price	Quan	Total
Almond Blossom Honey	8 oz plastic bottle with flip top lid @ \$10 ea		
<i>Almond Honey is sweet with a strong nutty aftertaste. Some people taste a bit of bitterness in the aftertaste as well. The color of Almond Honey tends towards brown, like the nut.</i>			
Apple Blossom Honey	8 oz plastic bottle with flip top lid @ \$13 ea		
<i>Apple Honey is light and sweet, with a nice natural apple taste.</i>			
Avocado Blossom Honey	8 oz plastic bottle with flip top lid @ \$8 ea		
<i>Avocado Honey tastes like dark buttery caramel with a touch of anise.</i>			
Basswood Blossom Honey	8 oz plastic bottle with flip top lid @ \$13 ea		
<i>Basswood honey has a nice and warm golden color. It ranges from white to extra light amber. The flavor is medium sweet and pleasantly fruity, with a hint of lime at the end.</i>			
Blackberry Blossom Honey	8 oz plastic bottle with flip top lid @ \$10 ea		
<i>Rich, warm, confectionary sweetness and a tiny hint of spice. Great for stepping up your baking and sauce recipes. It is also perfect for sweetening your tea.</i>			
Blueberry Blossom Honey	8 oz plastic bottle with flip top lid @ \$8 ea		
<i>Color range from light to dark amber, and a warm, pleasing aroma. Earthy and a bit tangy with a bold and somewhat fruity flavor, full-flavored, not overpowering.</i>			
Buckwheat Blossom Honey	8 oz plastic bottle with flip top lid @ \$8 ea		
<i>Bold and unique flavor that people either strongly like or strongly dislike. The flavor is earthy and complex like a dark roasted caffè mocha with an aroma of deep, warm cocoa.</i>			
Carrot Blossom Honey	8 oz plastic bottle with flip top lid @ \$10 ea		
<i>Dark amber color with an aroma reminiscent of chocolate. Taste is strong with a bite to it—a sharp spike in an otherwise earthy, caramel flavor. “Grassy” aftertaste.</i>			
Clover Blossom Honey	8 oz plastic bottle with flip top lid @ \$8 ea		
<i>Very popular honey. Typically light colored and has a sweet, flowery flavor and a pleasing mild taste. Combines well with other items.</i>			
Coffee Blossom Honey	8 oz plastic bottle with flip top lid @ \$13 ea		
<i>Light to dark amber color, delicious full bodied honey, with a taste of a light molasses.</i>			
Coriander Blossom Honey	8 oz plastic bottle with flip top lid @ \$10 ea		
<i>Hints of cardamom and gingerbread are the savory notes. The flavorful finish is earthy with a hint of fresh lime peel, a unique flavor found in honey varieties.</i>			
Cranberry Blossom Honey	8 oz plastic bottle with flip top lid @ \$10 ea		
<i>Has a medium amber color, a slightly reddish tint, and is prized for its strong berry flavor and delicious undertones without the tartness of the cranberry.</i>			
Fireweed Blossom Honey	8 oz plastic bottle with flip top lid @ \$12 ea		
<i>Clean and pleasant aroma, and a taste that is smooth, sweet and fruity with a delightful buttery finish. Fairly rare and lives up to the accolades it receives.</i>			
Knotweed Blossom Honey	8 oz plastic bottle with flip top lid @ \$8 ea		
<i>Dark, robust color, with an earthy, nutty, sweetness harvested in late summer/early fall when bees forage on this tall towering bamboo like plant.</i>			
Manuka Blossom Honey	8.8 oz glass jar with metal lid @ \$49 ea		
<i>New Zealand MGO 263+ rated. Research has found that Mānuka Honey can reduce the growth of bacteria in the gastrointestinal tract adding to the anti-inflammatory properties.</i>			
Meadowfoam Blossom Honey	8 oz plastic bottle with flip top lid @ \$12 ea		
<i>Widely known for its strong vanilla and/or marshmallow flavors. The vibrant white blossoms are stunning and can catch your eye from miles away.</i>			
Mesquite Blossom Honey	8 oz plastic bottle with flip top lid @ \$8 ea		
<i>Is a light, mild-tasting honey, and very delicious. This honey granulates more quickly than perhaps any other, at times seeming to crystalize virtually overnight.</i>			
Meyer Bees Wildflower Honey	8 oz plastic bottle with flip top lid @ \$8 ea		
<i>A honey bee created mixture of all the available nectar sources in our area. The nectar is from trees, flowers, fruits and even flowering weeds.</i>			

purchases can be made at the Minooka, IL showroom



Orders are processed on a first come first served basis - limited quantities of some honey varieties are available. We can substitute alternate varieties for out of stock product.

Check this box to NOT substitute





VARIETAL HONEY & BEE PRODUCTS ORDER FORM

Honey Variety / Product	Description / Price	Quan	Total
Orange Blossom Honey	8 oz plastic bottle with flip top lid @ \$8 ea <small>Flavor is mild, but very sweet, with just a hint of citrus. Because this honey variety is so sweet, it works well when mixed with other foods (such as plain yogurt) or for baking.</small>		
Pumpkin Blossom Honey	8 oz plastic bottle with flip top lid @ \$12 ea <small>Has sweet and rich pumpkin flavor. True to the squash flavor. It is mildly sweet with the aroma of summer fields and squash.</small>		
Radish Blossom Honey	8 oz plastic bottle with flip top lid @ \$10 ea <small>Not spicy like the plant, it has a sweet-yet-light flavor, with an aftertaste that leaves your mouth a bit dry.</small>		
Raspberry Blossom Honey	8 oz plastic bottle with flip top lid @ \$10 ea <small>Has a delicate floral scent and light raspberry flavor. The result is very pleasant aroma and wonderful taste.</small>		
Scotch Broom Blossom Honey	8 oz plastic bottle with flip top lid @ \$10 ea <small>Smokey, dried apricot flavor. Scotch broom pollen is likely the strongest flavor element in this honey varietal.</small>		
Sourwood Blossom Honey	8 oz plastic bottle with flip top lid @ \$13 ea <small>Prized by connoisseurs worldwide. Amber in color and granulates slowly. Extremely aromatic, with a distinctive honey flavor of anise and spice.</small>		
Southern Belle Blossom Honey	8 oz plastic bottle with flip top lid @ \$10 ea <small>Combination of Ti-Ti, Black Tupelo, Black Gum, Willow, and other plants produce a dark, quickly granulating honey that is excellent for baking and many teas.</small>		
Star Thistle Blossom Honey	8 oz plastic bottle with flip top lid @ \$10 ea <small>Light, transparent and a thick viscous appearance with a distinct aroma of anise, slightly sharp or pungent with notes of sweet, spicy cinnamon, molasses and prune.</small>		
Tallow Blossom Honey	8 oz plastic bottle with flip top lid @ \$10 ea <small>Warm brown color that has an herbal, grassy smell. Has a rich, not too sweet and slightly bitter, herbal taste with a caramel, slight cinnamon aftertaste.</small>		
Thyme Blossom Honey	8 oz plastic bottle with flip top lid @ \$13 ea <small>Very strong, intensely aromatic honey with herbal, savory flavors; fresh and reminiscent of tropical fruits, dates and white pepper.</small>		
Tropical Blossom Honey	8 oz plastic bottle with flip top lid @ \$8 ea <small>Has a warm caramel aroma with deep notes of molasses. The flavor is floral, herbaceous, and sweet.</small>		
Tupelo Blossom Honey	8 oz plastic bottle with flip top lid @ \$11 ea <small>Exquisite buttery flavor and light color, honey from the tupelo tree is sought after by honey aficionados the world over. Resists granulation due to high fructose to glucose ratios.</small>		
Vetch Blossom Honey	8 oz plastic bottle with flip top lid @ \$10 ea <small>Light, golden varietal honey features robust notes of peach and crisp apples followed by a hint of mint and fresh flowers.</small>		
Agave Nectar	8 oz plastic bottle with flip top lid @ \$8 ea		
Comb Honey	16 oz (approx) 100% natural raw honeycomb square in plastic container @ \$20 ea		
Creamed Honey	10 oz wide mouth glass jar with metal lid @ \$15		
Honey Powder	16 oz bulk pouch @ \$15 ea		
Bee Pollen	8 oz raw bee pollen in plastic bottle with flip top lid @ \$16 ea		
Honey Candy	16 oz assorted (Grape, Green Apple, Lemon, Orange and Strawberry) @ \$9 per bag		
Beeswax Tealight Candles	10 pack of 100% beeswax tealights with plastic holders @ \$15 per pack		
Honey Bee Advent Calendar	24 piece honey bee product sampler / 24 day advent calendar @ \$99 ea		



Name

Address

City State Zip

Phone Is this a mobile phone? (circle) Y N

Email address

Item	Price	Quan	Sub-Total
Total items above	NA		
Shipping & Handling for first item	\$9.95	1	\$9.95
Shipping & Handling for each additional item @ \$1 each	\$1 ea		
Total \$			
Payment (circle) CASH / CHECK#			

Beekeeping association(s) you belong to, how did you hear about us:



Orders can be mailed with a check or money order to:
Meyer Bees • 2021 Holt Road • Minooka, IL 60447
815-521-9116 • contact@meyerbees.com

Call us 815-521-9116 to pay via credit card

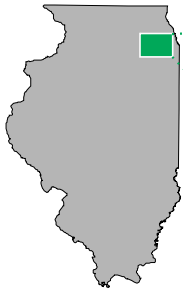


MEYER BEES

2021 Holt Road • Minooka IL 60447

PRESORTED
STANDARD
U.S. POSTAGE
PAID
MEYER BEES

COMPLETE LINE OF BEEKEEPING SUPPLIES AVAILABLE AT THE SHOWROOM & WAREHOUSE
JUST 35 MILES SOUTHWEST OF CHICAGO - STOP BY AND SEE US OR ORDER ONLINE!



*purchases can be
made at the
Minooka, IL
showroom*

- Hours of operation are 10 am to 4 pm
- Open Monday through Saturday all year long
- Open Sunday by appointment
- Tours of our apiary operation are available
- Order online for shipping across the USA



MEMBERS



Queens and most supply items can be shipped.

Unfortunately, no shipping on packages or nucs.



Dave Meyer, owner of Meyer Bees, has been beekeeping since 2004 starting with just a few colonies and now managing several hundred across multiple apiaries. Located in Minooka IL (about 35 miles southwest of Chicago), Dave and his family operate a beekeeping supply showroom / warehouse, raise local queens and provide packages, nucs and queens to beekeepers. He holds a Master Beekeeper certification, is a producer member in the Illinois Queen Initiative, is the Illinois State Beekeepers Association Northern Director and is active in many of the Chicagoland area beekeepers clubs.

MULTIPLE RACES AVAILABLE FOR 2023 PACKAGES, NUCS AND QUEENS
ITALIAN, RUSSIAN, CARNIOLAN, SASKATRAZ AND LOCAL MEYER BEES QUEENS

Order now ▶

